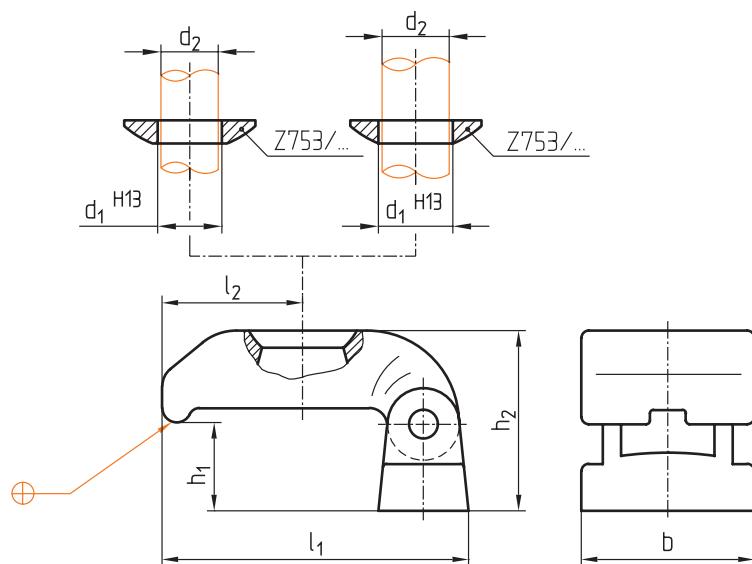


Z75/...

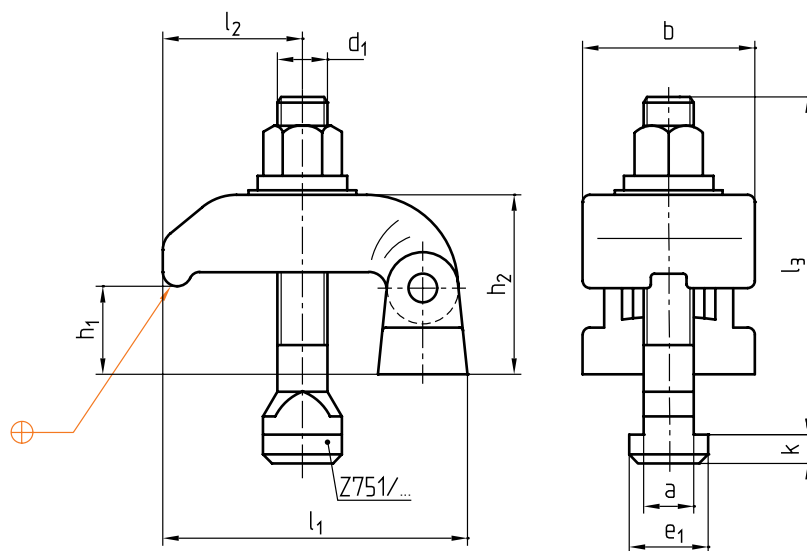
Mat.: ≈ 1.7218



h <sub>1</sub>		b	l <sub>1</sub>	l <sub>2</sub>	h <sub>2</sub>	d <sub>1</sub>		d <sub>2</sub>		Typ	Nr./No.
min.	max.										
17	24	35	65	29	40	13	17	12	16	<b>1</b>	Z75/1
20	28	48	85	39	50	17	21	16	20	<b>2</b>	2
25	36	60	105	48	64	21	25	20	24	<b>3</b>	3

Z75/Typ/...

Mat.: ≈ 1.7218



h <sub>1</sub>		b	l <sub>1</sub>	l <sub>2</sub>	h <sub>2</sub>	a	e <sub>1</sub>	l <sub>3</sub>	k	Typ	d <sub>1</sub>	Nr./No.
min.	max.											
17	24	35	65	29	40	14	22	80	8	<b>1</b>	<b>M12</b>	Z75/1/12
						18	28		10			<b>M16</b>
20	28	48	85	39	50	22	35	100	14	<b>2</b>	<b>M20</b>	2/20
									18			<b>M24</b>
25	36	60	105	48	64	28	44	125	18	<b>3</b>	<b>M24</b>	3/24
									18			3/24

This is trial version  
www.adultpdf.com